

\$774,990 - 8118 Quarterfield Road - Sussex K Model, Severn

MLS® #MDAA2129326

\$774,990

4 Bedroom, 2.50 Bathroom, 2,245 sqft
Residential on 0.97 Acres

THOMPSON FARMS, Severn, MD

Ameri-Star Homes is pleased to offer this incredible opportunity for a to-be-built, craftsman-style home situated on a beautiful almost 1 Acre Lot (.971 acres) in the established Thompson Farms community in Severn, Maryland. *Builder is paying \$5,000 TOWARDS CLOSING COSTS with use of builders approved lender and title company. Our exciting Sussex K model, featuring an English Basement, 4 bedrooms, 2 and half baths and a 2 car garage, is appointed with an abundance of features that you deserve including, 9-foot ceilings on the main level, engineered hardwood floors on the entire first floor, granite or quartz countertops, upgraded cabinets with soft close doors and drawers, ceramic-clad baths and laundry room, stainless appliances, washer and dryer package, stone accents on the exterior, architectural roof shingles, upgraded craftsman style moldings, craftsman newel posts with iron balusters, a sodded lawn and generous landscaping package and so much more. ALL STANDARD! A home that you certainly will be proud to drive up to. There is 2,245 square feet of above grade living space to enjoy and plenty of room for expansion including adding an optional finished rec room, an optional basement bedroom and optional full bathroom in the basement at an additional cost. Your new home will be located minutes to Ft. Meade, NSA, DISA and US Cyber



Command and you will have an easy commute to Baltimore, Washington DC, and historic Annapolis. Marc train service is available at the nearby BWI Airport. This is a rare opportunity for new construction on a large lot in Severn. The images illustrated in this listing may be representative of the builder's work in likeness and quality and may show optional features available. Prices, terms, conditions, and availability are subject to change without prior written notice.

Built in 2025

Essential Information

MLS® #	MDAA2129326
Price	\$774,990
Bedrooms	4
Bathrooms	2.50
Full Baths	2
Half Baths	1
Square Footage	2,245
Acres	0.97
Year Built	2025
Type	Residential
Sub-Type	Detached
Style	Colonial, Craftsman
Status	Active

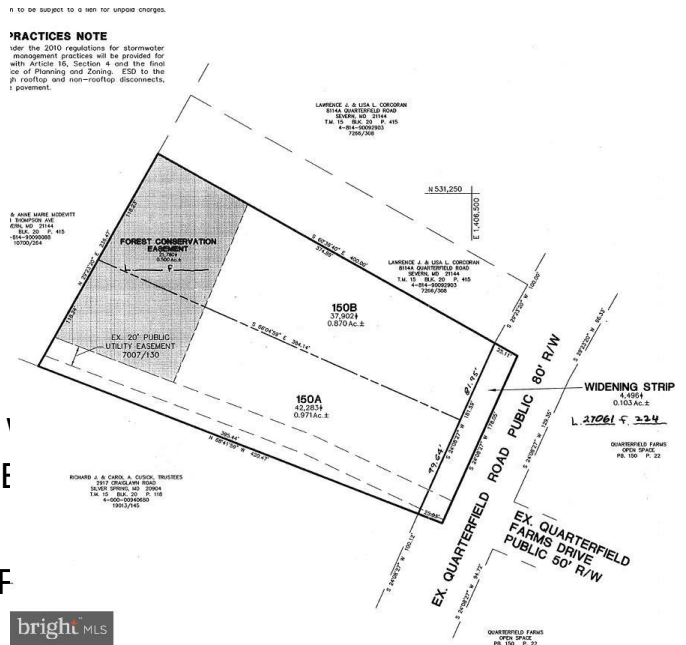
Community Information

Address	8118 Quarterfield Road - Sussex K Model
Subdivision	THOMPSON FARMS
City	Severn
County	ANNE ARUNDEL-MD
State	MD
Zip Code	21144

Amenities

Amenities Master Bath(s), Wood Floors, Pantry, Sprinkler System, Soaking Tub, Walk-in Closet(s)

Utilities	Cable TV
Parking	Concrete Driveway
# of Garages	2
Garages	Garage - Front Entry
Interior	
Interior Features	Floor Plan-Open
Appliances	Disposal, ENERGY STAR hood, Oven-Self Cleaning, Washer, Dryer - Electric, EN
Heating	Heat Pump(s)
Cooling	Heat Pump(s), Central A/C, F
Has Basement	Yes
Basement	Full, Poured Concrete, Sump Pump, Drainage System, Unfinished
# of Stories	3
Stories	3
Exterior	
Exterior	Concrete/Block, Vinyl Siding, Stone
Windows	Low-E, Vinyl Clad, Casement, Screens, Double Pane
Roof	Architectural Shingle
Foundation	Concrete Perimeter
School Information	
District	ANNE ARUNDEL COUNTY PUBLIC SCHOOLS
Elementary	QUARTERFIELD
Middle	OLD MILL MIDDLE NORTH
High	SEVERN RUN
Additional Information	
Date Listed	October 19th, 2025
Days on Market	11
Zoning	RESIDENTIAL
Listing Details	
Listing Office	Douglas Realty, LLC



© 2025 BRIGHT, All Rights Reserved. Information deemed reliable but not guaranteed. The data relating to real estate for sale on this website appears in part through the BRIGHT Internet Data Exchange program, a voluntary cooperative exchange of property listing data between licensed real estate brokerage firms in which Northrop Realty participates, and is provided by BRIGHT through a

licensing agreement. Real estate listings held by brokerage firms other than Northrop Realty . are marked with the IDX logo and detailed information about each listing includes the name of the listing broker. The information provided by this website is for the personal, non-commercial use of consumers and may not be used for any purpose other than to identify prospective properties consumers may be interested in purchasing. Some properties which appear for sale on this website may no longer be available because they are under contract, have Closed or are no longer being offered for sale. Some real estate firms do not participate in IDX and their listings do not appear on this website. Some properties listed with participating firms do not appear on this website at the request of the seller.

Listing information last updated on October 29th, 2025 at 11:00pm EDT